

SET RR SPIKE IN WEST SIDE OF GUY POLE
AT THE CORNER OF BALDWIN AND SAGINAW
ELEVATION = 937.71

4 CORNER OF
6, 16 N., R. 7 E.
BLANC
SEE COUNTY

PROPOSED SITE PLAN-ALT

SOUTHEAST CORNER
OF SECTION 26, T. 6 N.
OF GRAND BLANC
TWP., GENESSEE COUNTY

14' WEST OFF
CENTER LINE OF SAGINAW RD

CONCRETE PAVEMENT

SOUTH LINE OF SECTION 26

17" WATER

17" WATER

17" WATER

17" WATER

17" WATER

17" WATER

17" WATER

17" WATER

17" WATER

17" WATER

17" WATER

17" WATER

17" WATER

17" WATER

17" WATER

2366.90

221.46'

358.08'

149.82'

30'-0"

24'-0"

24'-0"

24'-0"

24'-0"

24'-0"

24'-0"

24'-0"

24'-0"

24'-0"

24'-0"

24'-0"

24'-0"

24'-0"

24'-0"

24'-0"

165.83'

181.10'

181.10'

181.10'

181.10'

181.10'

181.10'

181.10'

181.10'

181.10'

181.10'

181.10'

181.10'

181.10'

181.10'

181.10'

181.10'

181.10'

181.10'

181.10'

5 00' 30" 00" E

299.54'

149.54'

149.54'

149.54'

149.54'

149.54'

149.54'

149.54'

149.54'

149.54'

149.54'

149.54'

149.54'

149.54'

149.54'

149.54'

149.54'

149.54'

149.54'

N 00° 30' 00" W

N 08° 20' 00" W

N 54° 46' E

N 89° 25' 00" E

N 89° 25' 00" E

N 89° 25' 00" E

N 89° 25' 00" E

N 89° 25' 00" E

N 89° 25' 00" E

N 89° 25' 00" E

N 89° 25' 00" E

N 89° 25' 00" E

N 89° 25' 00" E

N 89° 25' 00" E

N 89° 25' 00" E

N 89° 25' 00" E

N 89° 25' 00" E

N 89° 25' 00" E

N 89° 25' 00" E

N 89° 25' 00" E

S 81° 29' 00" W

S 81° 29' 00" W

S 81° 29' 00" W

S 81° 29' 00" W

S 81° 29' 00" W

S 81° 29' 00" W

S 81° 29' 00" W

S 81° 29' 00" W

S 81° 29' 00" W

S 81° 29' 00" W

S 81° 29' 00" W

S 81° 29' 00" W

S 81° 29' 00" W

S 81° 29' 00" W

S 81° 29' 00" W

S 81° 29' 00" W

S 81° 29' 00" W

S 81° 29' 00" W

S 81° 29' 00" W

S 81° 29' 00" W

17" WATER

17" WATER

17" WATER

17" WATER

17" WATER

17" WATER

17" WATER

17" WATER

17" WATER

17" WATER

17" WATER

17" WATER

17" WATER

17" WATER

17" WATER

17" WATER

17" WATER

17" WATER

17" WATER

17" WATER

OVERHEAD WIRES

OVERHEAD WIRES

OVERHEAD WIRES

OVERHEAD WIRES

OVERHEAD WIRES

OVERHEAD WIRES

OVERHEAD WIRES

OVERHEAD WIRES

OVERHEAD WIRES

OVERHEAD WIRES

OVERHEAD WIRES

OVERHEAD WIRES

OVERHEAD WIRES

OVERHEAD WIRES

OVERHEAD WIRES

OVERHEAD WIRES

OVERHEAD WIRES

OVERHEAD WIRES

OVERHEAD WIRES

OVERHEAD WIRES

FIRE HYDRANT

FIRE HYDRANT

FIRE HYDRANT

FIRE HYDRANT

FIRE HYDRANT

FIRE HYDRANT

FIRE HYDRANT

FIRE HYDRANT

FIRE HYDRANT

FIRE HYDRANT

FIRE HYDRANT

FIRE HYDRANT

FIRE HYDRANT

FIRE HYDRANT

FIRE HYDRANT

FIRE HYDRANT

FIRE HYDRANT

FIRE HYDRANT

FIRE HYDRANT

FIRE HYDRANT

BURIED FIBER OPTICS CABLE

BURIED FIBER OPTICS CABLE

BURIED FIBER OPTICS CABLE

BURIED FIBER OPTICS CABLE

BURIED FIBER OPTICS CABLE

BURIED FIBER OPTICS CABLE

BURIED FIBER OPTICS CABLE

BURIED FIBER OPTICS CABLE

BURIED FIBER OPTICS CABLE

BURIED FIBER OPTICS CABLE

BURIED FIBER OPTICS CABLE

BURIED FIBER OPTICS CABLE

BURIED FIBER OPTICS CABLE

BURIED FIBER OPTICS CABLE

BURIED FIBER OPTICS CABLE

BURIED FIBER OPTICS CABLE

BURIED FIBER OPTICS CABLE

BURIED FIBER OPTICS CABLE

BURIED FIBER OPTICS CABLE

BURIED FIBER OPTICS CABLE

MICH BELL

MICH BELL

MICH BELL

MICH BELL

MICH BELL

MICH BELL

MICH BELL

MICH BELL

MICH BELL

MICH BELL

MICH BELL

MICH BELL

MICH BELL

MICH BELL

MICH BELL

MICH BELL

MICH BELL

MICH BELL

MICH BELL

MICH BELL

12" WATER

12" WATER

12" WATER

12" WATER

12" WATER

12" WATER

12" WATER

12" WATER

12" WATER

12" WATER

12" WATER

12" WATER

12" WATER

12" WATER

12" WATER

12" WATER

12" WATER

12" WATER

12" WATER

12" WATER

12" WATER

12" WATER

12" WATER

12" WATER

12" WATER

12" WATER

12" WATER

12" WATER

12" WATER

12" WATER

12" WATER

12" WATER

12" WATER

12" WATER

12" WATER

12" WATER

12" WATER

12" WATER

12" WATER

12" WATER

12" WATER

12" WATER

12" WATER

12" WATER

12" WATER

12" WATER

12" WATER

12" WATER

12" WATER

12" WATER

12" WATER

12" WATER

12" WATER

12" WATER

12" WATER

12" WATER

12" WATER

12" WATER

12" WATER

IN 1

POINTE

NORTH

25

R1

BALDWIN

R2

R1

MDM

LDM

MDM

NS

OS

OS

SAGINAW

MDM

LDM

OS

RT

MDM

R2

R2

I-1

27

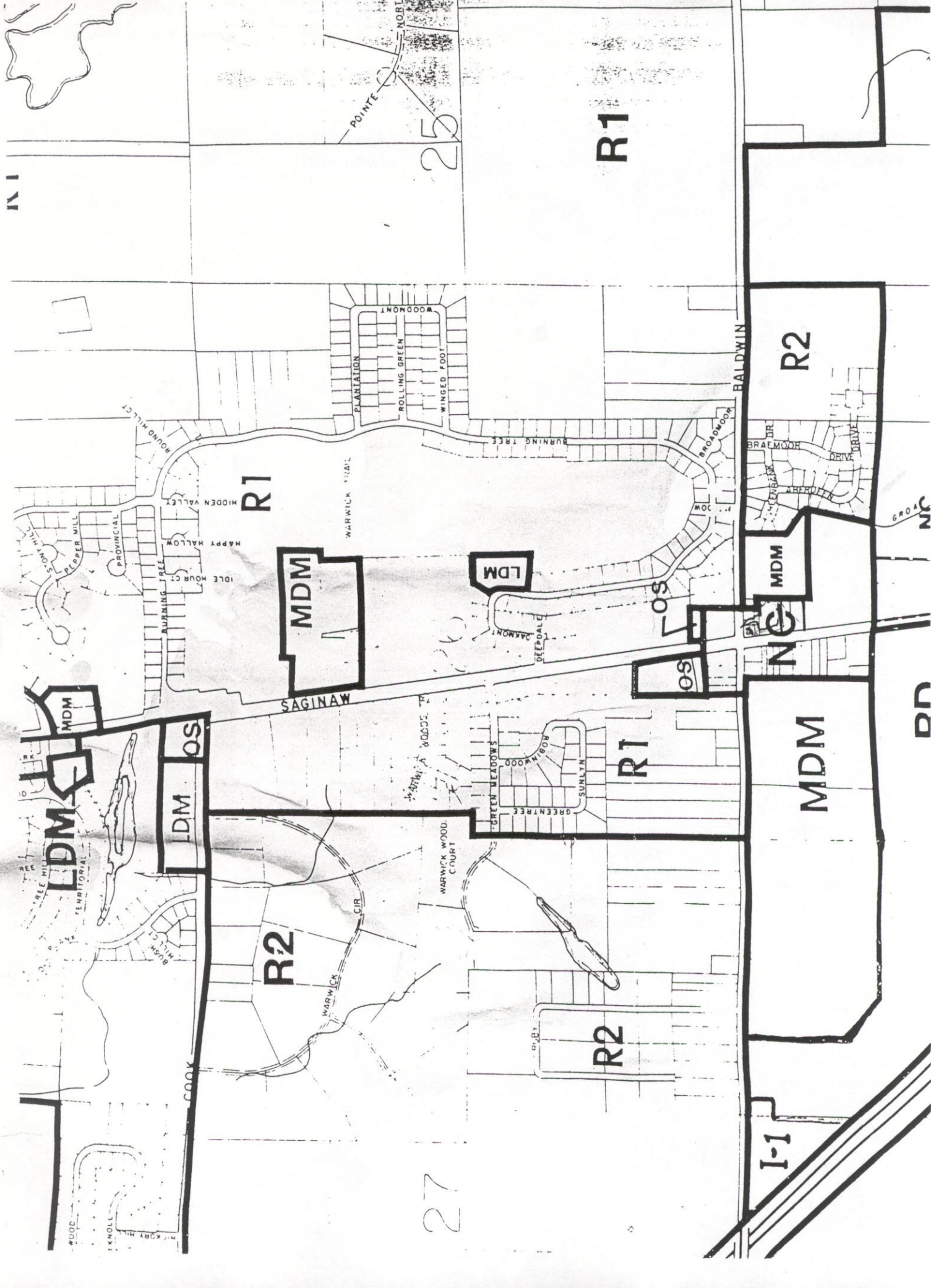
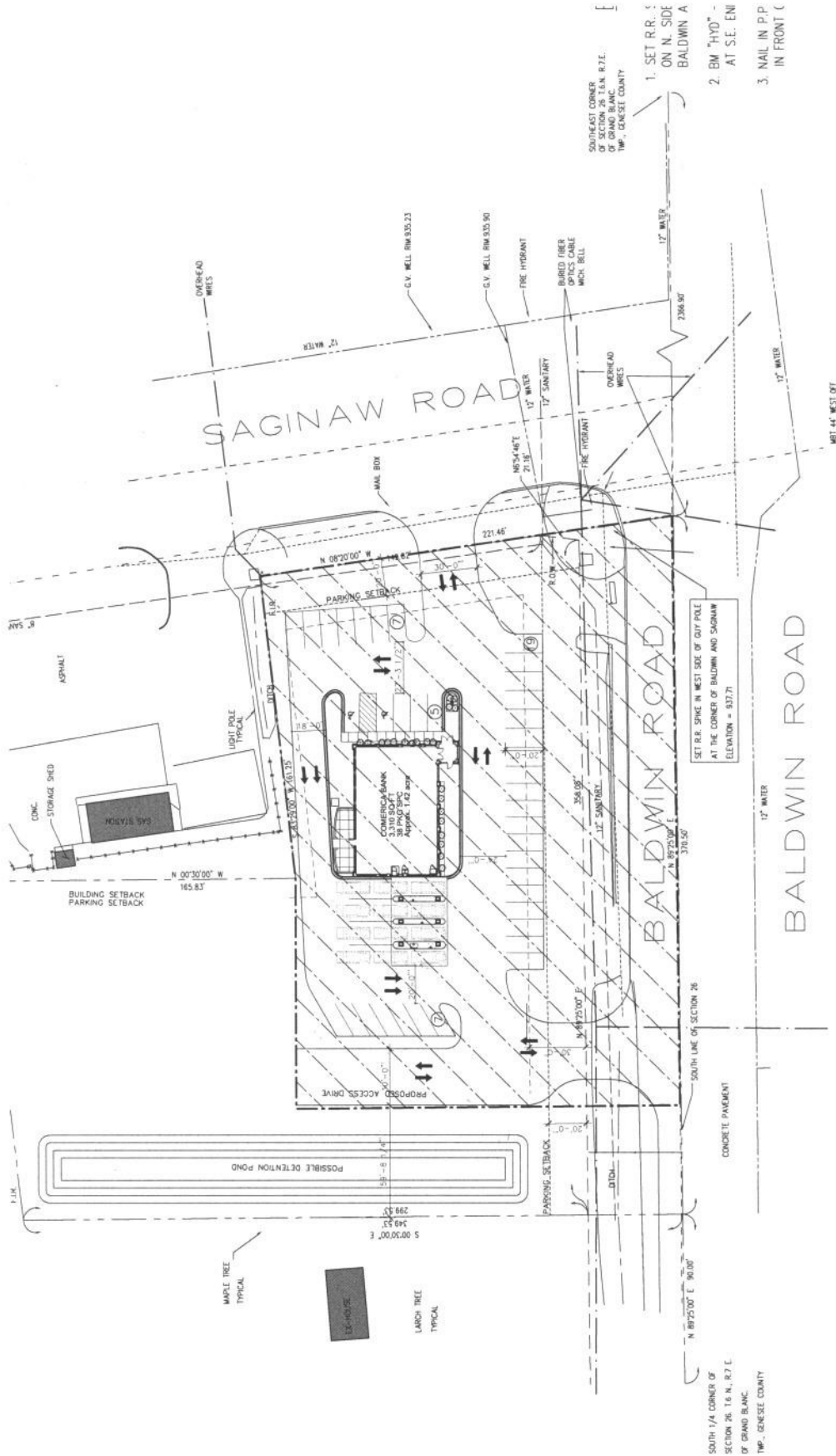


EXHIBIT A



- SOUTHEAST CORNER OF SECTION 26 1/4 N. 87° E. 1/4 TWP., GENESSEE COUNTY
1. SET R.R. S. ON N. SIDE BALDWIN A
 2. BM "HYD" - AT S.E. EN
 3. NAIL IN P.P. IN FRONT (

SET R.R. SPIKE IN WEST SIDE OF GUY POLE AT THE CORNER OF BALDWIN AND SAGINAW ELEVATION = 937.71

GRAND BLANC - Saginaw & Baldwin Rd.
NTS
PROPOSED SCHEME 2 08.20.04



Trammel Crow Company
LITTLE
REGISTERED PROFESSIONAL ENGINEERS